

UNIT 2 – HOME FIRE ESCAPE PLAN



MATCHING WORDS AND PICTURES

No matter what type of home you live in, it is vital you know what to do if a fire occurs. Follow these rules to plan how you would escape a fire in your home.

1. Match the sentences to the correct picture. The first one is done for you.



1. Get Down Low Go Go Go and stay out of the smoke

2. Alert other people on the way out



3. If it is safe to do so, close doors to slow the spread of smoke and fire



4. Get out and stay out



5. Meet at a safe place outside your home eg letterbox or footpath



6. Call 000 (triple zero) from a mobile phone or a neighbour's phone. Ask for FIRE



UNIT 2 – HOME FIRE ESCAPE PLAN



COMPLETE THE SENTENCES

2. Read these sentences. Tick (✓) the box with the best answer.

a. If it is safe, close the doors to slow the spread of smoke and ...

☐

germs

☐

fire

☐

noise

b. Heat and smoke rise. You should: “Crawl down low and ...

☐

roll, roll, roll”

☐

jump, jump, jump”

☐

go, go, go”

c. Alert other people on your way ...

☐

in

☐

up

☐

out

d. Your family should plan to meet at a safe meeting place such as your ...

☐

backyard

☐

letter box

☐

bathroom

e. Get out and stay out. Call 000 (triple zero) on a mobile phone or a **neighbours’ phone. Ask for ...**

☐

Police

☐

Fire

☐

Ambulance

4. Look at the verbs in the box. Practise them.
Circle the verbs in the sentences above.

close	crawl	go	alert
meet	plan	stay	call

UNIT 2 – HOME FIRE ESCAPE PLAN

COMPLETE THE PHRASES



The phrases below tell you what to do if a fire occurs in your home.
Complete each phrase by adding a word.
Use the verbs in the box. You may use the same word twice.

alert	wait	get	slow	meet	stay
call	ask	close	crawl	escape	

- _____ down low.
- _____ out of the smoke.
- _____ from your home
- _____ other people on your way out.
- _____ at your Safe Meeting Place.
- _____ at your Safe Meeting Place.
- _____ the door to the room on fire.
- _____ down the spread of smoke.
- _____ out.
- _____ out.
- _____ 000 (triple zero)
- _____ for FIRE.

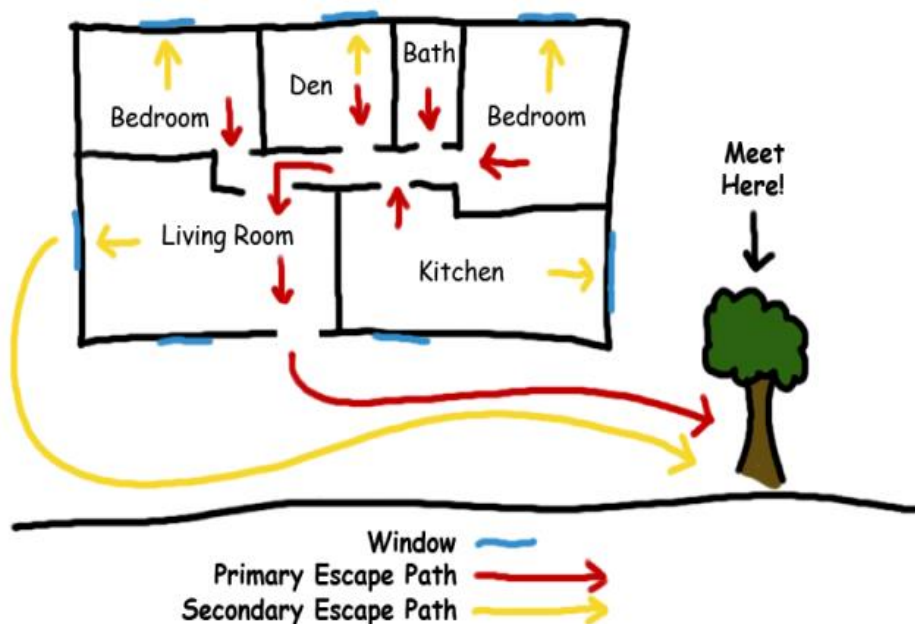
UNIT 2 – HOME FIRE ESCAPE PLAN



TRUE OR FALSE?

Circle the correct answer.

- | | | |
|---|------|-------|
| a) You should alert other people in your home. | True | False |
| b) Closing doors to a room on fire will slow the spread of smoke. | True | False |
| c) Your family should have a Safe Meeting Place. | True | False |
| d) In a fire emergency you call 000 (triple zero) | True | False |
| e) Wait at your Safe Meeting Place for the fire service. | True | False |
| f) If you forget something you should go back inside to get it. | True | False |
| g) Your whole family should practise your Home Escape Plan. | True | False |



Does *your* family have a Home Escape Plan? YES ☐ NO ☐

What is *your* Safe Meeting Place? _____

UNIT 2 – HOME FIRE ESCAPE PLAN



WRITING SENTENCES

Answer these questions. Write a sentence for each one.

Q1. What should you do if there is smoke in your home?

Q2. What can you do to slow the spread of smoke?

Q3. Why should you NEVER go back into a burning home?

Q4. What phone number do you call for the fire brigade in Australia?

Q5. Why should your family discuss a Home Escape Plan and a Safe Meeting Place for your home?

UNIT 2 – HOME FIRE ESCAPE PLAN



HIGH RISE APARTMENTS

If you live in a high rise apartment you have extra fire safety concerns. Escaping from a fire in a high rise building can be difficult. It is even more critical to be prepared for fire. There will be special equipment and signage in your building. There will be an emergency evacuation plan.

Match the high rise fire safety message with the photo on the right.

a. Know where the FIRE HOSE REELS are.



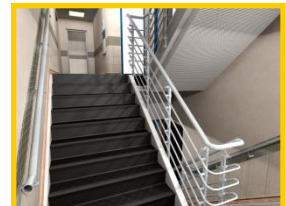
b. Know where the EMERGENCY EXITS are.



c. NEVER USE the LIFTS if there is a fire.



d. Know your EMERGENCY ASSEMBLY AREAS.



e. FIRE STAIRS will lead you to a safe place.



f. Do not obstruct or keep a FIRE DOOR open.

**EMERGENCY
ASSEMBLY
AREA**