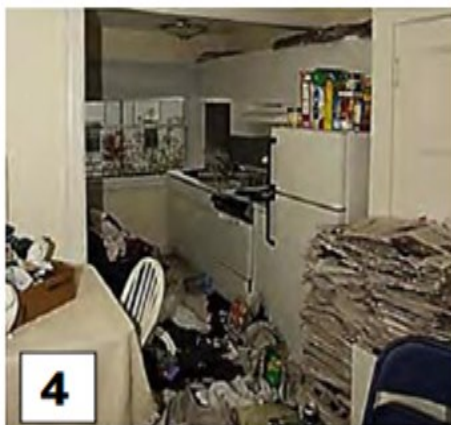


Clutter Image Rating Scale



Levels 5 - 9 = Increased risk of fire, injury or death

Every 4-6 Days ...

FRV firefighters respond to an emergency in a residential property where hoarding and/or squalor is present



Hoarding is- the persistent accumulation of and lack of ability to relinquish large numbers of objects that compromises the intended use of premises and threatens the health and safety of affected people and their neighbours.

Squalor is - an unsanitary living environment that has arisen from extreme prolonged neglect and poses substantial health and safety risks to people living in the affected premises and their neighbours.

Hoarding and squalor can be found independently or co-exist

Hoarding and Squalor, A Practical Resource for Service Providers
The Department of Health and Human Services.

When investigating, inspecting or assessing an individual and their residence in relation to hoarding and/or squalor, FRV recommends the following considerations:

- Is there access and egress from the street to the residence
- Are combustibles and accumulated items stacked to the neighbouring fence lines
- How close are neighbouring properties i.e. is the residence an apartment or semi-detached
- Can doors and windows be accessed from the outside
- Are internal pathways and doorways clear
- Are there working smoke alarms
- Are utilities connected
- What arrangements does the occupant have for cooking, cleaning, heating and lighting
- Are there items stacked on or around “live” electrical appliances, power boards and extension leads
- Has a hoarding notification been placed on the property with FRV

FOR ADDITIONAL INFORMATION ON:

Hoarding and or Squalor or the Hoarding Notification System

Contact At Risk Groups, Community Resilience

03 9665 4464 or atriskgroups@frv.vic.gov.au

