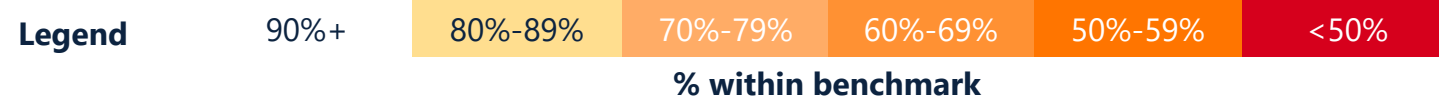




Reporting Period: 1 October 2025 - 31 December 2025

Emergency Medical Response incidents (EMR) meeting benchmark by Station Maintenance Area

FRV has service delivery standards, which specify a response time target for a station to attend an emergency incident. The service delivery standard (response time) for EMR is 9.2 minutes.



FRV District + Station Maintenance Area	Number of incidents within the Station Maintenance Area for the reporting period	Number of emergency incidents within the Station Maintenance Area for the reporting period	Number of emergency incidents the standards were met by any station	% of emergency incidents the standards were met by any station	The time in minutes in which 90% of emergency incidents were responded to by any station
<b>Central District</b>	<b>273</b>	<b>272</b>	<b>268</b>	<b>98.5%</b>	<b>7.0</b>
01. Eastern Hill	35	34	34	100.0%	5.1
02. West Melbourne	12	12	12	100.0%	6.0
03. Carlton	24	24	24	100.0%	5.5
04. Brunswick	20	20	20	100.0%	6.9
10. Richmond	23	23	23	100.0%	6.0
13. Northcote	15	15	14	93.3%	7.0
18. Hawthorn	20	20	20	100.0%	7.1
35. Windsor	54	54	53	98.1%	7.7
38. South Melbourne	31	31	31	100.0%	6.1
39. Port Melbourne	16	16	14	87.5%	8.0
50. Ascot Vale	23	23	23	100.0%	7.7
<b>Eastern District</b>	<b>140</b>	<b>140</b>	<b>135</b>	<b>96.4%</b>	<b>7.8</b>
19. North Balwyn	12	12	10	83.3%	9.5
20. Box Hill	24	24	24	100.0%	7.3
22. Ringwood	18	18	18	100.0%	8.0
23. Burwood	23	23	23	100.0%	6.6
26. Croydon	18	18	18	100.0%	6.2
27. Nunawading	30	30	28	93.3%	8.8
85. Boronia	15	15	14	93.3%	7.0
<b>North West Region</b>	<b>67</b>	<b>64</b>	<b>61</b>	<b>95.3%</b>	<b>7.5</b>
68. Lucas	11	11	10	90.9%	6.2
70. Warrnambool	16	14	14	100.0%	7.2
72. Mildura	21	20	20	100.0%	7.6
73. Bendigo	19	19	17	89.5%	7.9
<b>Northern District</b>	<b>189</b>	<b>189</b>	<b>180</b>	<b>95.2%</b>	<b>8.2</b>
05. Broadmeadows	31	31	26	83.9%	9.4
06. Pascoe Vale	16	16	16	100.0%	8.0
07. Thomastown	13	13	13	100.0%	6.3
11. Epping	18	18	18	100.0%	6.2
12. Preston	30	30	30	100.0%	6.3
14. Bundoora	24	24	23	95.8%	7.9
15. Heidelberg	19	19	18	94.7%	7.8
80. Craigieburn	26	26	24	92.3%	9.0
81. South Morang	12	12	12	100.0%	7.2
<b>South East Region</b>	<b>62</b>	<b>59</b>	<b>57</b>	<b>96.6%</b>	<b>8.2</b>
75. Shepparton	19	18	17	94.4%	8.6
76. Wodonga	20	18	18	100.0%	8.4
77. Traralgon	10	10	10	100.0%	6.4
78. Morwell	13	13	12	92.3%	6.7
<b>Southern District 1</b>	<b>175</b>	<b>175</b>	<b>168</b>	<b>96.0%</b>	<b>8.0</b>
24. Glen Iris	17	17	16	94.1%	8.4
25. Oakleigh	17	17	17	100.0%	7.7
29. Clayton South	18	18	17	94.4%	7.5
31. Glen Waverley	17	17	17	100.0%	6.9
32. Ormond	22	22	20	90.9%	8.3
33. Mentone	18	18	18	100.0%	7.4
34. Highett	28	28	27	96.4%	8.1
86. Rowville	14	14	14	100.0%	6.3
89. Springvale	24	24	22	91.7%	7.2
<b>Southern District 2</b>	<b>148</b>	<b>147</b>	<b>140</b>	<b>95.2%</b>	<b>8.0</b>
87. Dandenong	30	30	29	96.7%	8.0
88. Hallam	22	22	19	86.4%	9.6
90. Patterson River	15	15	15	100.0%	7.5
91. Frankston	42	41	40	97.6%	7.5
92. Cranbourne	29	29	27	93.1%	9.0
94. Mornington	10	10	10	100.0%	6.4
<b>Western District 1</b>	<b>151</b>	<b>151</b>	<b>141</b>	<b>93.4%</b>	<b>8.5</b>
40. Laverton	14	14	13	92.9%	8.8
42. Newport	10	10	9	90.0%	6.9
45. Brooklyn	17	17	16	94.1%	8.4
47. Footscray	34	34	32	94.1%	7.9
57. Tarneit	59	59	55	93.2%	8.7
58. Point Cook	17	17	16	94.1%	8.0
<b>Western District 2</b>	<b>192</b>	<b>189</b>	<b>171</b>	<b>90.5%</b>	<b>9.2</b>
41. St. Albans	33	33	32	97.0%	7.7
43. Deer Park	17	17	17	100.0%	7.6
44. Sunshine	25	25	25	100.0%	7.2
48. Taylors Lakes	12	12	12	100.0%	6.8
51. Keilor	22	22	20	90.9%	8.7
52. Tullamarine	13	13	12	92.3%	9.0
53. Sunbury	13	13	11	84.6%	9.9
55. Caroline Springs	19	18	10	55.6%	11.7
56. Melton	38	36	32	88.9%	10.4
<b>Western District 3</b>	<b>64</b>	<b>62</b>	<b>61</b>	<b>98.4%</b>	<b>7.6</b>
62. Corio	31	29	29	100.0%	8.0
63. Geelong City	22	22	21	95.5%	7.0
64. Belmont	11	11	11	100.0%	6.4
<b>Total</b>	<b>1461</b>	<b>1448</b>	<b>1382</b>	<b>95.4%</b>	<b>8.2</b>

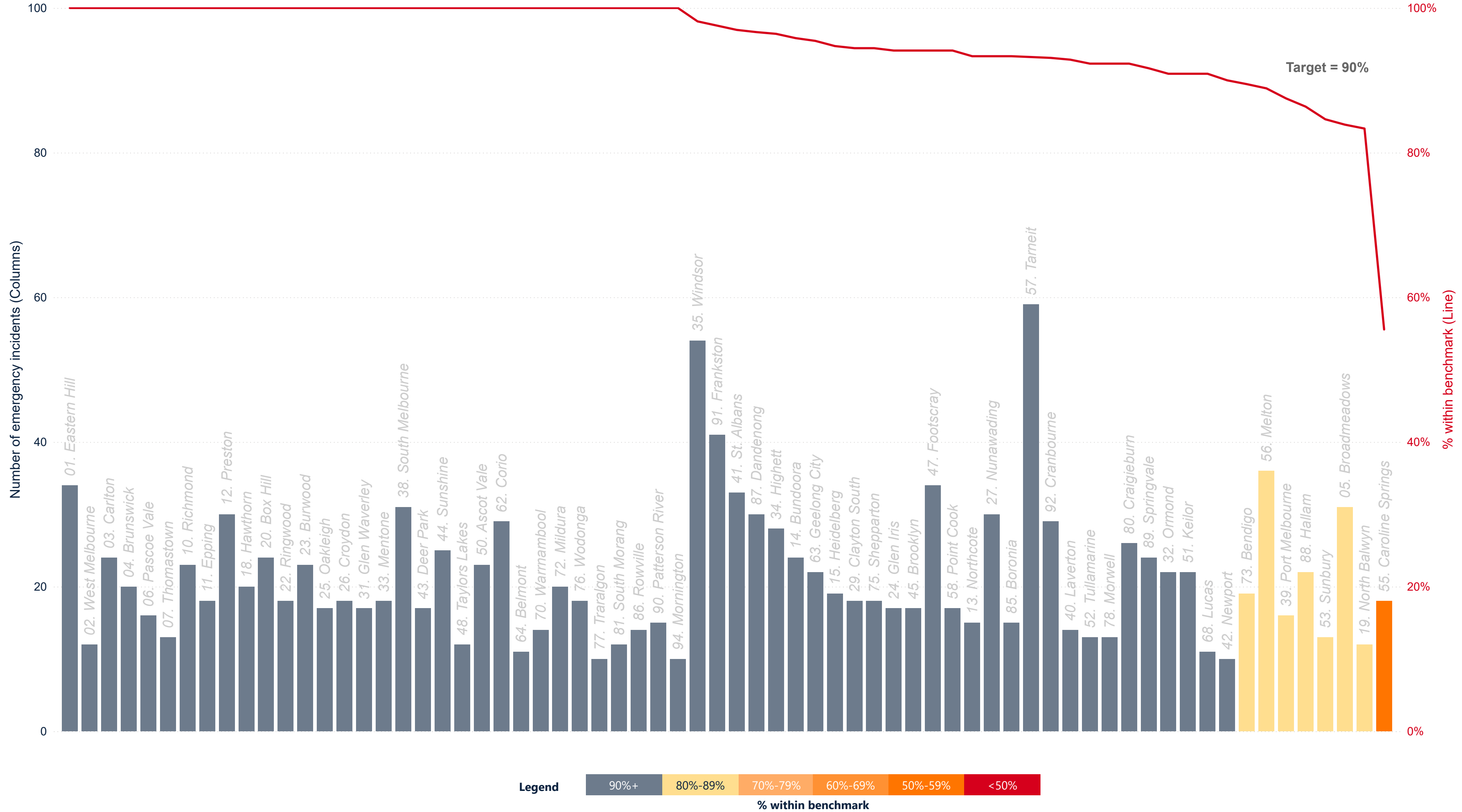


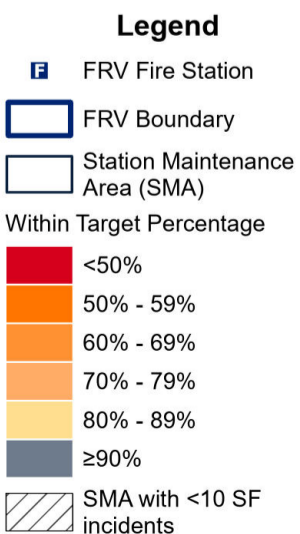
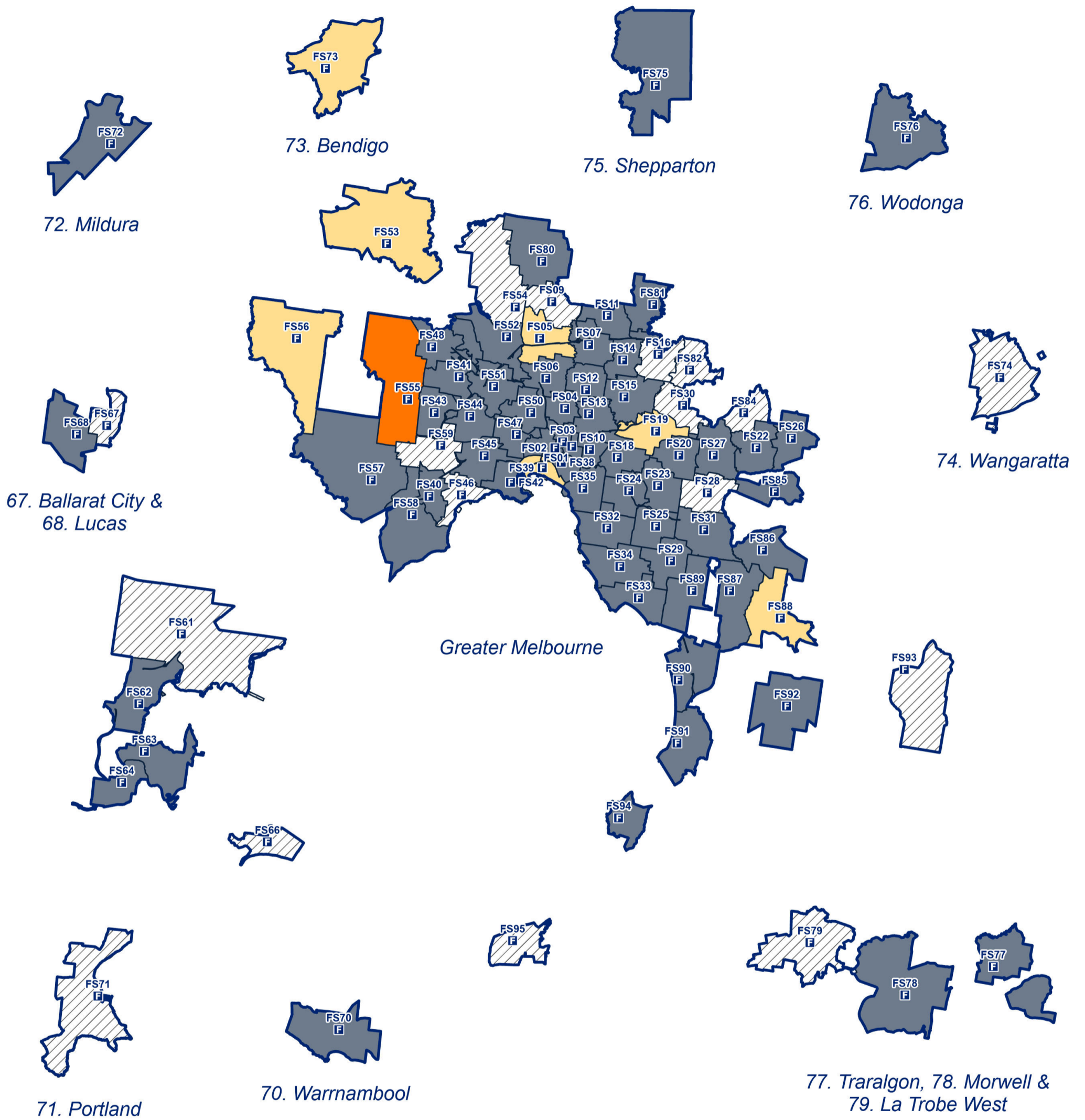
Response time data for Fire Rescue Victoria (FRV) appliances responding to Emergency Medical Response incidents in the FRV Fire District where the FRV appliances are primary appliances (1st appliance onscene)



Emergency Medical Response Incidents - Response Times Meeting Benchmarks

Reporting Period: 1 October 2025 - 31 December 2025





FRV Business Intelligence & GIS  
 Map produced: March 2026  
 Request ID: Public Reporting/FY2025-26/Q2/Maps

(c) State Government of Victoria 2026  
 This map is a snapshot generated from Victorian Government data as well as data from various other sources. This does not guarantee that the publication is without flaw of any kind or is wholly appropriate for your particular purposes and therefore disclaims all liability for error, loss or damage which may arise from reliance upon it. All persons accessing this information should make appropriate enquiries to assess the currency of the data.



Scale  
1:500,000

